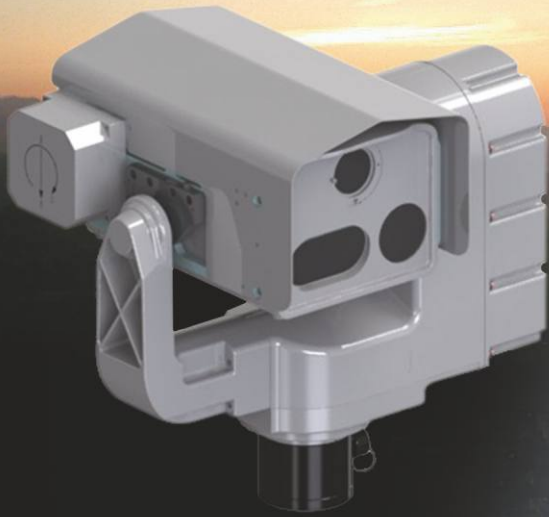


## ASSP

*Advanced Stabilised Sensor Platform, the Ultimate Modular Surveillance or Target Acquisition System*



# ASSP

### Main Advantages & Features

- Highly configurable modular multifunction system
- Long range thermal and day camera surveillance
- Gyro stabilised motorised pan & tilt unit
- Built-in digital video stabilisation
- Continuous zoom colour day camera
- Continuous zoom thermal imager
- Range measurement capability
- Ruggedised for harsh environments
- Remote operation via PC based controller
- Auto tracking capability
- North orientation capability
- Own position capability

### Applications

- Border Surveillance
- Coastal Surveillance
- Port authorities and shipping control
- Customs and coastguard applications
- Naval applications
- Security & perimeter defence
- Military reconnaissance vehicles
- Large fire control systems, including anti-aircraft guns

## Advanced Stabilised Sensor Platform, the Ultimate Modular Surveillance or Target Acquisition System

### Outline Specification

#### Pan & Tilt Head:

Maximum axis speed	60°/S
Minimum axis speed	0.0056°/S
Positional accuracy	0.056° 1σ
Positional repeatability	0.056° 1σ
Backlash	Backlash free
Fail safe brake	Yes

#### Stabilisation performance:

Maritime application	Better than 1.5IFOV (PTP)
Static application (mast)	Better than 1 IFOV (PTP)
Vehicle mounted (engine)	Better than 1 IFOV (PTP)
Digital stabilisation:	
-Sub pixel performance	Yes

#### Thermal Imager:

Detector type	3rd generation, 640 x 512 x15μm
Cooling	Stirling closed cycle with integral dewar
Cooling time	<7mins
Spectral band	MWIR3-5μm
Fields of view (continuous zoom x6)	
-Narrow	2.5°
-Wide	15°
-Wide screen	25°
Video out	Pal or NTSC
Range Performance:	
-Detection (Nato / human)	11.5km / 5.5km
-Recognition (Nato / human)	4.5km / 2.5km

#### Laser Range Finder:

Range Performance:	
-Nato target	7km (5m accuracy)
-Extended target	20km

#### Colour Day Camera:

Continuous zoom	x36
NFOV	1.7°
WFOV	58°
Video out	Pal or NTSC
Range Performance:	
-Detection (Nato / human)	13.5km / 7.5km
-Recognition (Nato / human)	3.3km / 1.4km

Power source Options	20 - 32Vdc (MIL-STD-1275 compliant)
Environmental conditions	IAW MIL-STD-810F
Operating temperature	-32°C - +71°C

### Options

- Solar shield
- Customer tailored remote control consoles and system cabling
- Maritime colour and sealing
- Pan & tilt slipping for continuous rotation in azimuth
- Auto tracking capability
- North orientation capability
- Own position capability
- Video streaming and control via ethernet
- Map overlays
- Panoramic viewing
- Automatic detection of changes in the FOV
- Pre-prepared route in the scene
- Target Geo-location
- Slew to cue (Radar or other)



### Instro Precision Limited

Tel : + 44 (0) 1843 604455 Fax : + 44 (0) 1843 864143  
 Email : [marketing@instro.com](mailto:marketing@instro.com) Web : [www.instro.com](http://www.instro.com)