



WASP

High Performance Motorised Pan & Tilt

Key Features

- Modular unit, adaptable to suit a wide range of payload configurations and mid / long range applications
- Gyro stabilisation*
- Maritime environmental protection*
- Vehicle ruggedisation*
- Azimuth slipring as standard supporting payload power, fast and Gigabit Ethernet, serial comms and analogue video
- Ethernet or RS422 communications
- High precision Control
- High accuracy, high axis speed (60°/s)
- Rugged compact design
- Environmentally sealed (IP67)

*Factory option

Copyright © Instro Precision Limited

The Wasp is a family of high performance motorised pan and tilts, configurable to support a wide range of sensor and sensor suites for long range surveillance tasks.

The Wasp is capable of axis speeds of up to 60° per second and is ideally suited for mast mounted homeland security and critical infrastructure protection where a high degree of controllability and positional accuracy is required.

Using an adapter, the Wasp is equally suited to tripod mounted applications.

The Wasp is available in two standard versions, basic 'L' configuration and 'U' configuration with a support arm for heavier payloads.

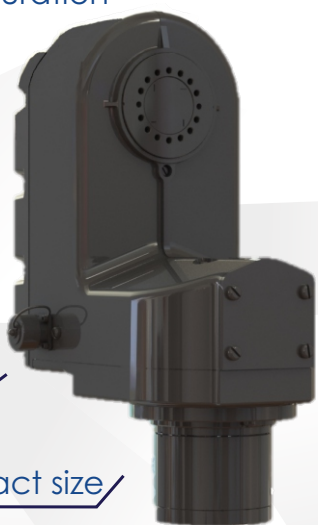
Ruggedised versions with a higher shock and vibration capacity are available for use on vehicles and marinisation options support coastal and seaborne operation.

The capability of the Wasp motorised pan and tilt can be further extended with the addition of factory options such as gyro stabilisation and the use of support arm spaces to achieve optimum payload mass distribution.

WASP

High Performance Motorised Pan & tilt

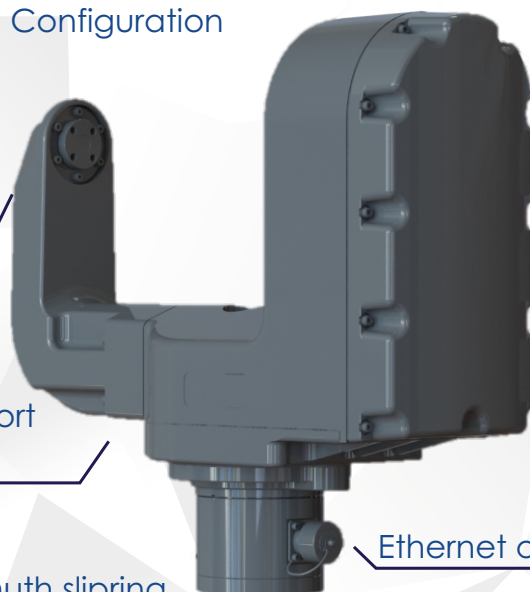
'L' Configuration



Ethernet or RS422

Rugged compact size

'U' Configuration



Support Arm

Optional Support
Arm Spacers

Azimuth slipping
assembly

NOTE 1

Wasp is available with or without a support arm. When fitted with a standard support arm, space for payload is 266mm. Wider payloads can be accommodated by the use of support arm spacers.

NOTE 2

Wasp is capable of stabilising to $\leq 0.028^\circ$ RMS under a disturbance of $\pm 7^\circ$ in a three second period with a 15kg balanced payload, at an ambient temperature of 21°C .

Outline Specification

Weight	From 12kg (26.4lbs)
Dimensions ^{NOTE 1}	424 x 462 x 166mm
Torque	25Nm
Payload Capacity	Up to 30kg
Elevation Range	$\pm 90^\circ$
Azimuth Range	360° (continuous)
Max Velocity	$60^\circ/\text{s}$
Accuracy	0.056° 1σ
Operating Voltage	20- 32 Vdc
Communications	Ethernet or RS422
Water Submersion	IP-67
Operating Temp	-32°C to 71°C

Applications

- Fixed and Mobile border surveillance
- Coastal surveillance
- Port and shipping control
- Customs and Coastguard
- Vehicle mounted surveillance
- Maritime applications
- Security & perimeter surveillance

Options

- Maritime environmental protection
- Gyro stabilisation^{NOTE 2}
- Ruggedisation for vehicle applications
- Support arm spacers
- Customer tailored remote control consoles and cabling
- Customer specific payload mounting adaptors
- Customer specific paint colour



Instro Precision Limited

Tel : + 44 (0) 1843 604455 Fax : + 44 (0) 1843 864143
Email : marketing@instro.com Web : www.instro.com